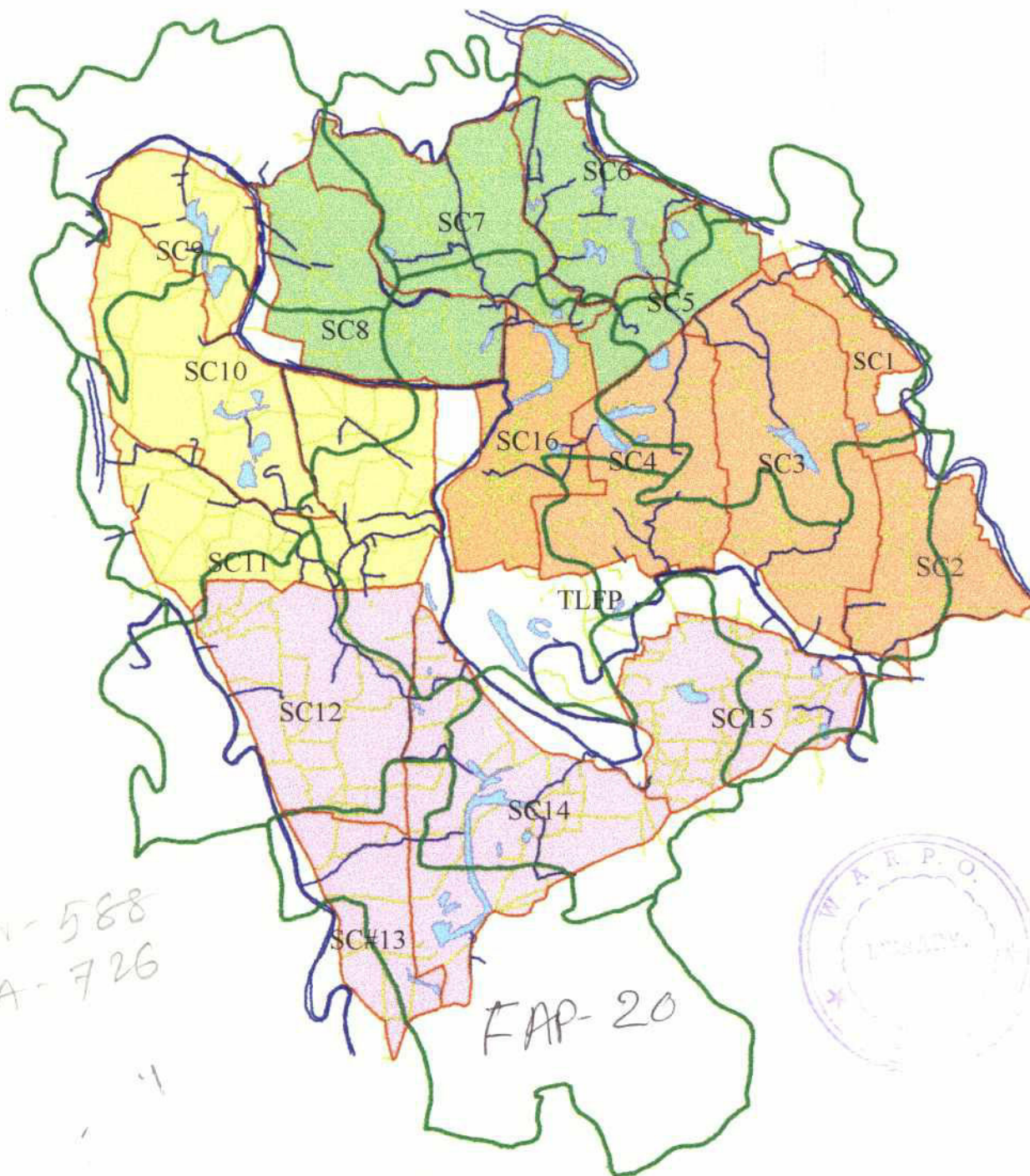


HALIM - Call - 726  
FAP-20 FAP-20

51

# CPP GIS ATLAS



Compartmentalization Pilot Project Tangail  
Draft version - May 1995

A.K.M. HALIMUR RAHMAN  
Superintending Engineer, FPCO  
Ministry of Water Resources  
7, Green Road, Dhaka.

2

FAP-20

# ***CPP GIS ATLAS***

***Compartmentalization Pilot Project Tangail***

***Draft version - May 1995***

74  
Q

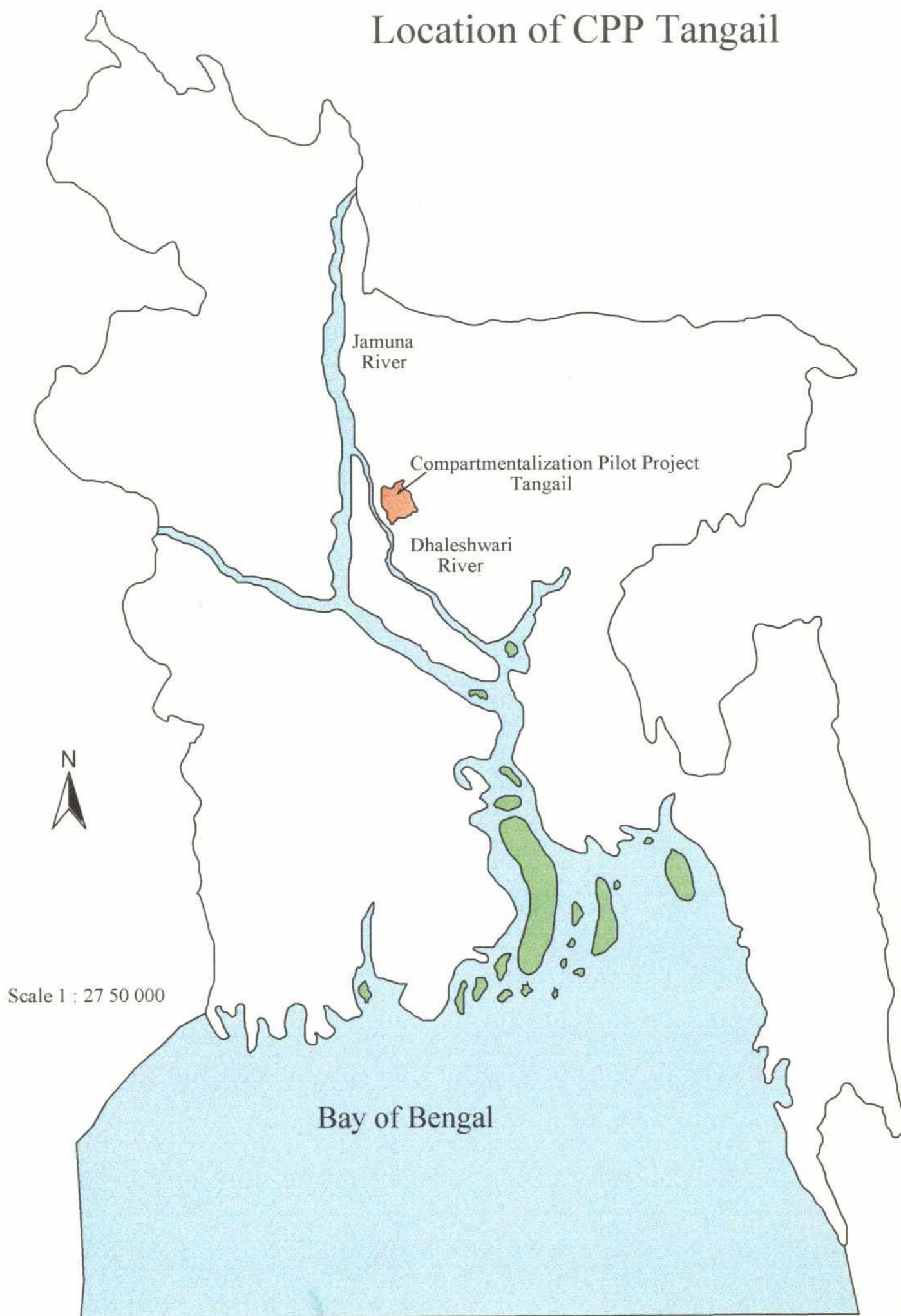
Index of CPP GIS-ATLAS

1. **Location of Tangail Compartment in Bangladesh**
2. **Location of Tangail Compartment and Dhaleswari Closure**
3. **Tangail Compartment: Clusters and Subcompartments**  
table: land use for subcompartments
4. **Tangail Compartment: Chawks**  
table: land use for chawks
5. **Tangail Compartment: Settlements**
6. **Tangail Compartment: Drainage Congestion**
7. **Tangail Compartment: Interventions Except Khal Excavation and Embankments**  
Status as per April 30, 1995
8. **Tangail Compartment: Khal Excavation and Embankments, Status as per April 30, 1995;**
9. **Tangail Compartment: Institutional Impact, Status as per March 30, 1995**
10. **Tangail Compartment, Cluster Ib: Monsoon cropping pattern**  
table: areas with different crops
11. **Tangail Compartment, Cluster Ib: Irrigation Survey 1993**  
table: number of irrigation facilities per subcompartment
12. **Tangail Compartment, Cluster Ib: Fishponds**
13. **Tangail Compartment, Cluster Ib: Socio-Economics**
14. **Tangail Compartment: Interventions Cluster Ib**  
table: interventions which are in this map and status
15. **Tangail Compartment: Interventions Cluster II**  
table: interventions which are in this map and status
16. **Tangail Compartment: Interventions Cluster III**  
table: interventions which are in this map and status
17. **Tangail Compartment: Interventions Cluster IV**  
table: interventions which are in this map and status



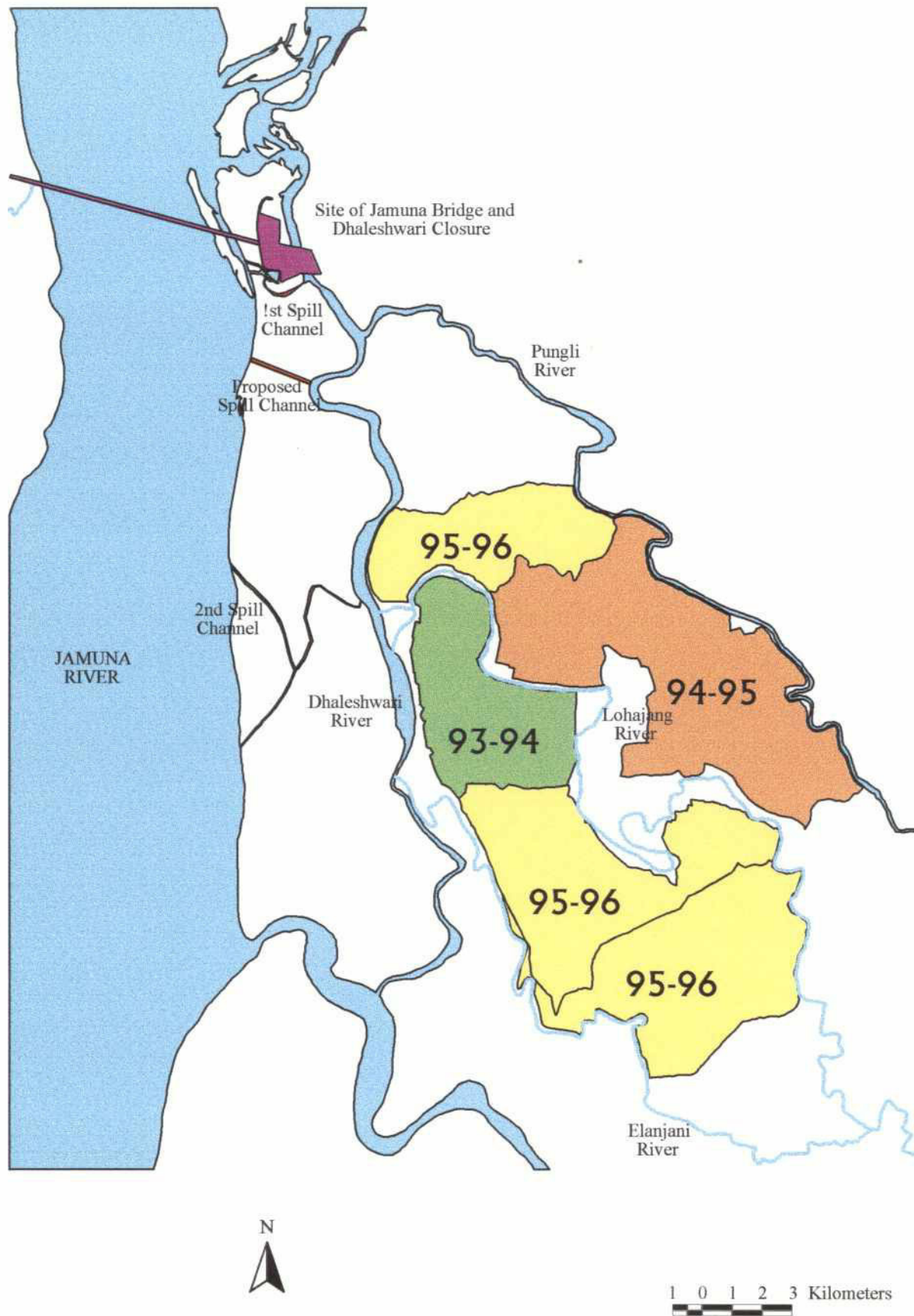


## Location of CPP Tangail



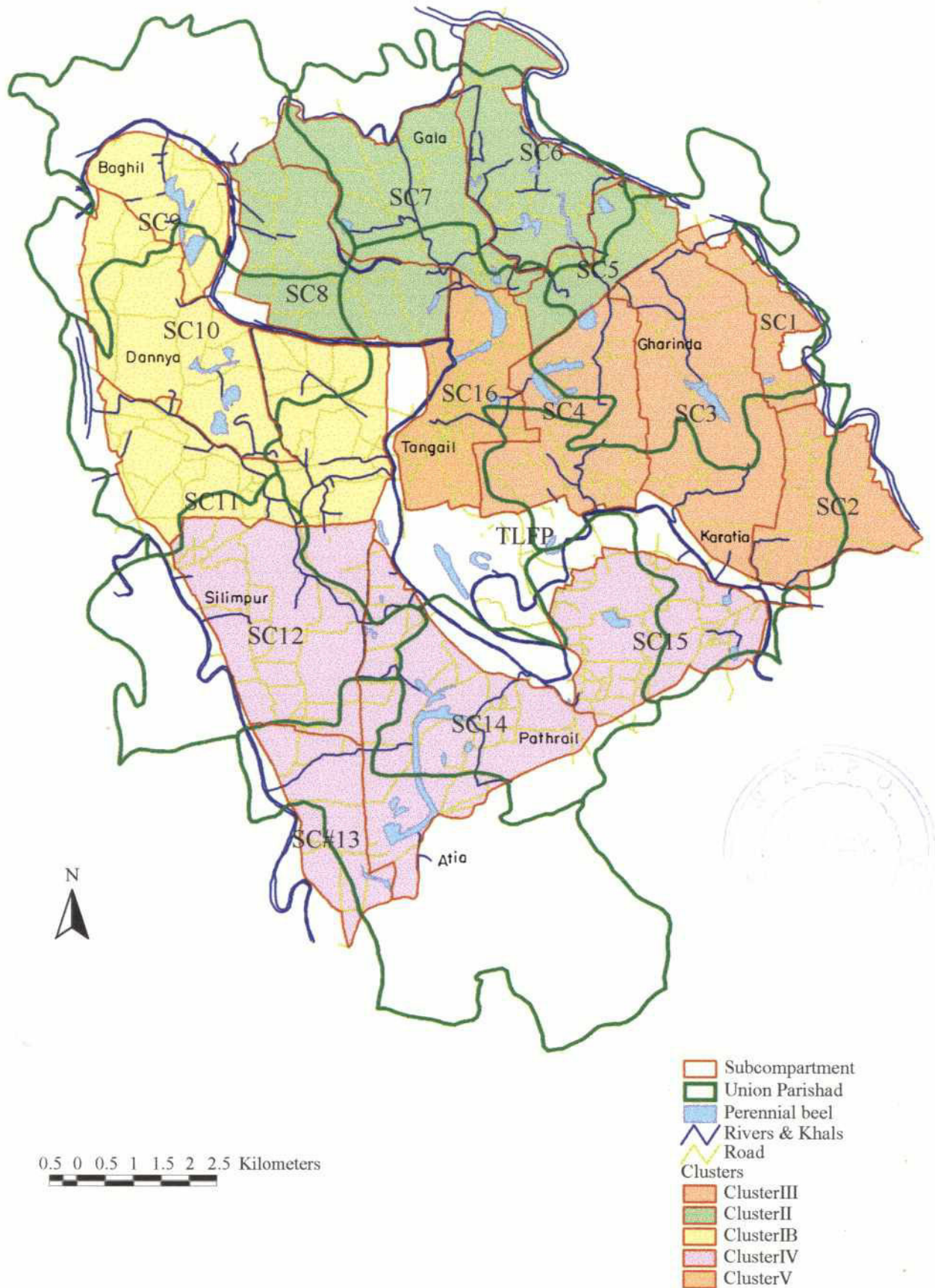
# Location of CPP Tangail and Dhaleshwari Closure

C





# Compartmentalization Pilot Project Tangail Clusters & Subcompartments



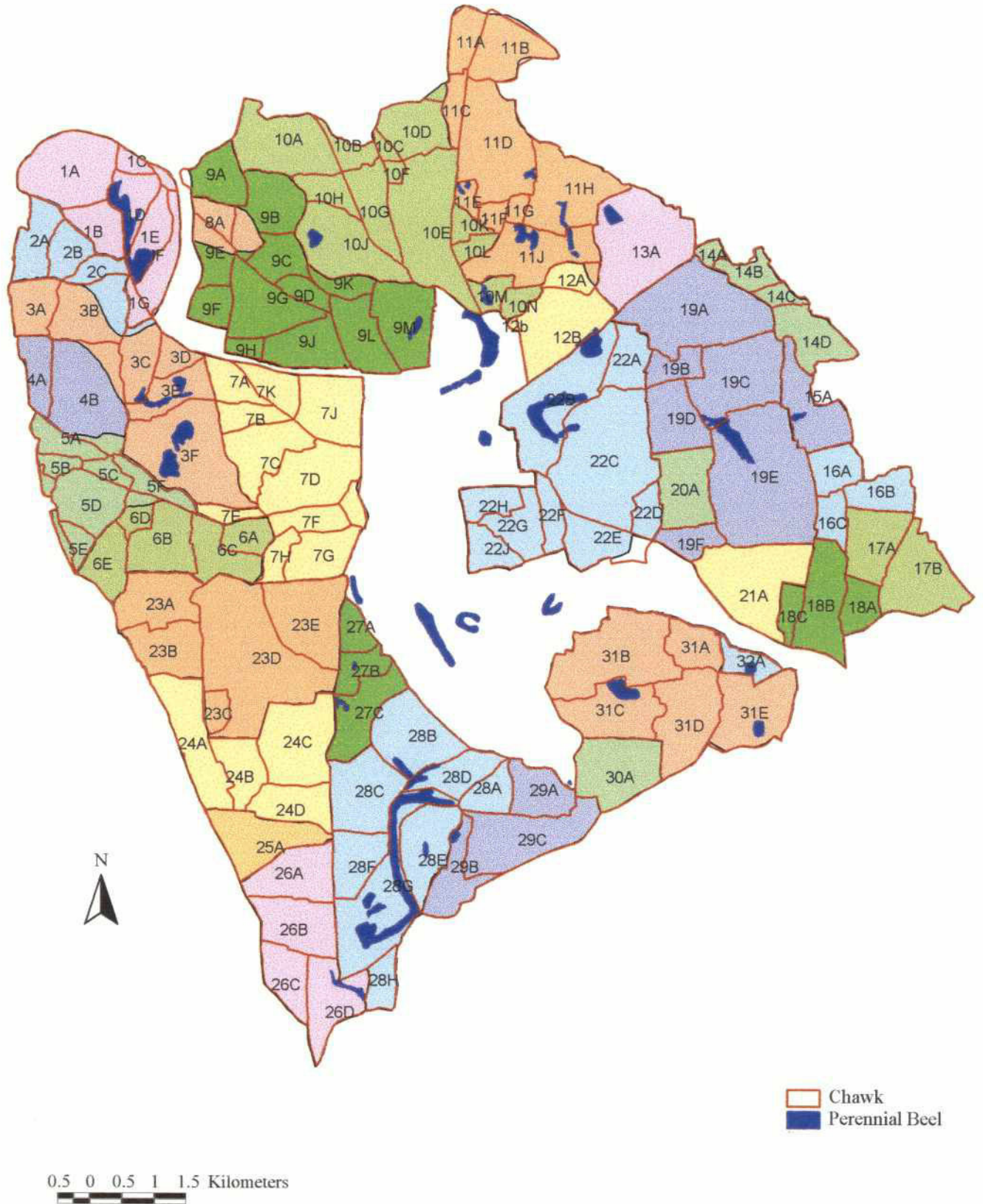
## Sub-compartmentwise calculation of areas in Tangail Compartment

Apr.23'95

Sub-compartment no. #	Sub-compartment area (hectare)	Settlement area (hectare)	Beel area (hectare)	River area (hectare)	Gross cultivable area (hectare)
1	247	55	1		191
2	544	106	0		438
3	1116	170	15		931
4	805	195	31		579
5	369	101	6		262
6	669	133	13		523
7	796	120	6		670
8	779	134	3		642
9	403	86	28		289
10	876	169	25		682
11	1168	337	0		831
12	1037	222	0		815
13	457	122	3		332
14	1186	260	63		863
15	767	203	14		550
16	619	431	26	6	156
LFP	1362	254	27	72	1009
<b>TOTAL</b>	<b>13200</b>	<b>3098</b>	<b>261</b>	<b>78</b>	<b>9763</b>



# Compartmentalization Pilot Project Tangail Systems & Chawks





## Chawkwise calculation of areas in Tangail Compartment

Apr.23'95

Chawk Name	Area hectare	Beel Area hectare	Settlement Area hectare	Gross Cultivable Area hectare
1A	144		42	102
1B	55		7	48
1C	16		5	11
1D	57	16	16	25
1E	55	12	7	36
1F	59		1	58
1G	17		8	9
<b>System 1</b>	<b>403</b>	<b>28</b>	<b>86</b>	<b>289</b>
<b>Sub-compartment 9 (System 1)</b>				
2A	63		14	49
2B	45		16	29
2C	28		12	16
<b>System 2</b>	<b>136</b>	<b>0</b>	<b>42</b>	<b>94</b>
3A	55		14	41
3B	106		25	81
3C	61	2	8	51
3D	27		5	22
3E	61	6	10	45
3F	204	17	34	153
<b>System 3</b>	<b>514</b>	<b>25</b>	<b>96</b>	<b>393</b>
4A	49		13	36
4B	177		18	159
<b>System 4</b>	<b>226</b>	<b>0</b>	<b>31</b>	<b>195</b>
<b>Sub-compartment 10 (System 2,3,4)</b>				
5A	40		22	18
5B	26		10	16
5C	20		9	11
5D	84		21	63
5E	30		4	26
5F	33		15	18
<b>System 5</b>	<b>233</b>	<b>0</b>	<b>81</b>	<b>152</b>
6A	39		3	36
6B	92		12	80
6C	70		23	47
6D	29		8	21
6E	60		15	45
<b>System 6</b>	<b>290</b>	<b>0</b>	<b>61</b>	<b>229</b>
7A	45		10	35
7B	38		19	19
7C	95		20	75
7D	130		45	85
7E	22		5	17
7F	63		22	41
7G	74		36	38
7H	31		14	17
7J	100		14	86
7K	47		10	37
<b>System 7</b>	<b>645</b>	<b>0</b>	<b>195</b>	<b>450</b>
<b>Sub-compartment 11 (System 6,7)</b>				
	<b>1168</b>	<b>0</b>	<b>337</b>	<b>831</b>

## Chawkwise calculation of areas in Tangail Compartment

Apr.23'95

Chawk Name	Area hectare	Beel Area hectare	Settlement Area hectare	Gross Cultivable Area hectare
8A	27		3	24
System 8	27	0	3	24
9A	66		22	44
9B	105		14	91
9C	53		11	42
9D	27		0	27
9E	48		4	44
9F	37		6	31
9G	105		16	89
9H	16		2	14
9J	79		17	62
9K	29		1	28
9L	80		10	70
9M	107	3	28	76
System 9	752	3	131	618
<b>Sub-compartment 8 (System 8,9)</b>				
	779	3	134	642
10A	138		20	118
10B	30		7	23
10C	11		4	7
10D	79		6	73
10E	199		24	175
10F	10		4	6
10G	71		8	63
10H	39		5	34
10J	130	3	16	111
10K	20		3	17
10L	21		7	14
10M	26	3	9	14
10N	22		7	15
System 10	796	6	120	670
<b>Sub-compartment 7 (System 10)</b>				
	796	6	120	670
11A	46		11	35
11B	89		6	83
11C	32		7	25
11D	179	2	37	140
11E	18	1	6	11
11F	20		5	15
11G	15		6	9
11H	139	2	29	108
11J	131	8	26	97
System 11	669	13	133	523
<b>Sub-compartment 6 (System 11)</b>				
	669	13	133	523
12A	31		12	19
12B	132	1	36	95
System 12	163	1	48	114
13A	206	5	53	148
System 13	206	5	53	148
<b>Sub-compartment 5 (System 12,13)</b>				
	369	6	101	262

## Chawkwise calculation of areas in Tangail Compartment

Apr.23'95

Chawk Name	Area hectare	Beel Area hectare	Settlement Area hectare	Gross Cultivable Area hectare
14A	14		2	12
14B	37		12	25
14C	19		4	15
14D	79		19	60
<b>System 14</b>	<b>149</b>	<b>0</b>	<b>37</b>	<b>112</b>
15A	98	1	18	79
<b>System 15</b>	<b>98</b>	<b>1</b>	<b>18</b>	<b>79</b>
<b>Sub-compartment 1 (System 14,15)</b>	<b>247</b>	<b>1</b>	<b>55</b>	<b>191</b>
16A	52		8	44
16B	57		10	47
16C	36		6	30
<b>System 16</b>	<b>145</b>	<b>0</b>	<b>24</b>	<b>121</b>
17A	89		6	83
17B	125		15	110
<b>System 17</b>	<b>214</b>	<b>0</b>	<b>21</b>	<b>193</b>
18A	43		8	35
18B	113		39	74
18C	29		14	15
<b>System 18</b>	<b>185</b>	<b>0</b>	<b>61</b>	<b>124</b>
<b>Sub-compartment 2 (System 16,17,18)</b>	<b>544</b>	<b>0</b>	<b>106</b>	<b>438</b>
19A	224		48	176
19B	39		9	30
19C	150	3	18	129
19D	86		4	82
19E	309	12	25	272
19F	40		17	23
<b>System 19</b>	<b>848</b>	<b>15</b>	<b>121</b>	<b>712</b>
20A	97		18	79
<b>System 20</b>	<b>97</b>	<b>0</b>	<b>18</b>	<b>79</b>
21A	171		31	140
<b>System 21</b>	<b>171</b>	<b>0</b>	<b>31</b>	<b>140</b>
<b>Sub-compartment 3 (System 19,20,21)</b>	<b>1116</b>	<b>15</b>	<b>170</b>	<b>931</b>
22A	58		18	40
22B	185	29	38	118
22C	268	2	50	216
22D	32		11	21
22E	78		22	56
22F	37		18	19
22G	62		11	51
22H	42		13	29
22J	43		14	29
<b>System 22</b>	<b>805</b>	<b>31</b>	<b>195</b>	<b>579</b>
<b>Sub-compartment 4 (System 22)</b>	<b>805</b>	<b>31</b>	<b>195</b>	<b>579</b>



## Chawkwise calculation of areas in Tangail Compartment

Apr.23'95

Chawk Name	Area hectare	Beel Area hectare	Settlement Area hectare	Gross Cultivable Area hectare
23A	97		42	55
23B	86		25	61
23C	24		4	20
23D	303		48	255
23E	135		22	113
<b>System 23</b>	<b>645</b>	<b>0</b>	<b>141</b>	<b>504</b>
24A	119		45	74
24B	63		17	46
24C	140		5	135
24D	70		14	56
<b>System 24</b>	<b>392</b>	<b>0</b>	<b>81</b>	<b>311</b>
<b>Sub-compartment 12 (System 23,24)</b>	<b>1037</b>	<b>0</b>	<b>222</b>	<b>815</b>
25A	108		43	65
<b>System 25</b>	<b>108</b>	<b>0</b>	<b>43</b>	<b>65</b>
26A	96		16	80
26B	97		18	79
26C	63		26	37
26D	93	3	19	71
<b>System 26</b>	<b>349</b>	<b>3</b>	<b>79</b>	<b>267</b>
<b>Sub-compartment 13 (System 25,26)</b>	<b>457</b>	<b>3</b>	<b>122</b>	<b>332</b>
27A	33		11	22
27B	40	0	20	20
27C	88		31	57
<b>System 27</b>	<b>161</b>	<b>0</b>	<b>62</b>	<b>99</b>
28A	45		22	23
28B	122	5	30	87
28C	118		20	98
28D	63	4	1	58
28E	96	2	8	86
28F	69		11	58
28G	189	50	21	118
28H	35		1	34
<b>System 28</b>	<b>737</b>	<b>61</b>	<b>114</b>	<b>562</b>
29A	69		21	48
29D	71	2	32	37
29C	148		31	117
<b>System 29</b>	<b>288</b>	<b>2</b>	<b>84</b>	<b>202</b>
<b>Sub-compartment 14 (System 27,28,29)</b>	<b>1186</b>	<b>63</b>	<b>260</b>	<b>863</b>
30A	123		67	56
<b>System 30</b>	<b>123</b>	<b>0</b>	<b>67</b>	<b>56</b>
31A	54		10	44
31B	189		46	143
31C	112	9	24	79
31D	129		16	113
31E	125	3	32	90
<b>System 31</b>	<b>609</b>	<b>12</b>	<b>128</b>	<b>469</b>
32A	35	2	8	25
<b>System 32</b>	<b>35</b>	<b>2</b>	<b>8</b>	<b>25</b>
<b>Sub-compartment 15 (System 30,31,32)</b>	<b>767</b>	<b>14</b>	<b>203</b>	<b>550</b>

# Compartmentalization Pilot Project Tangail Settlement



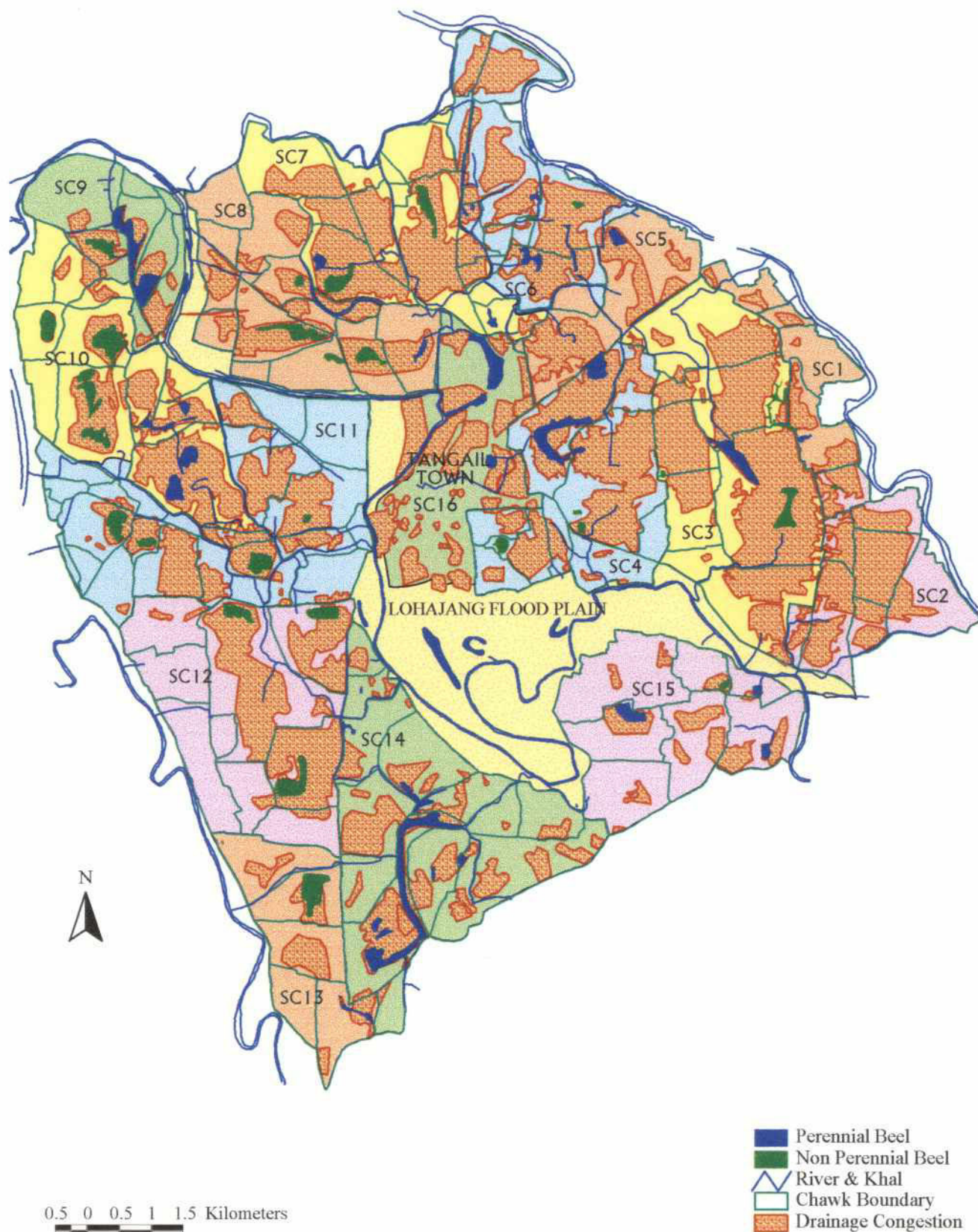
0.5 0 0.5 1 1.5 2 Kilometers

- Subcompartment
- Perennial beel
- Rivers & Khals
- Road
- Settlement



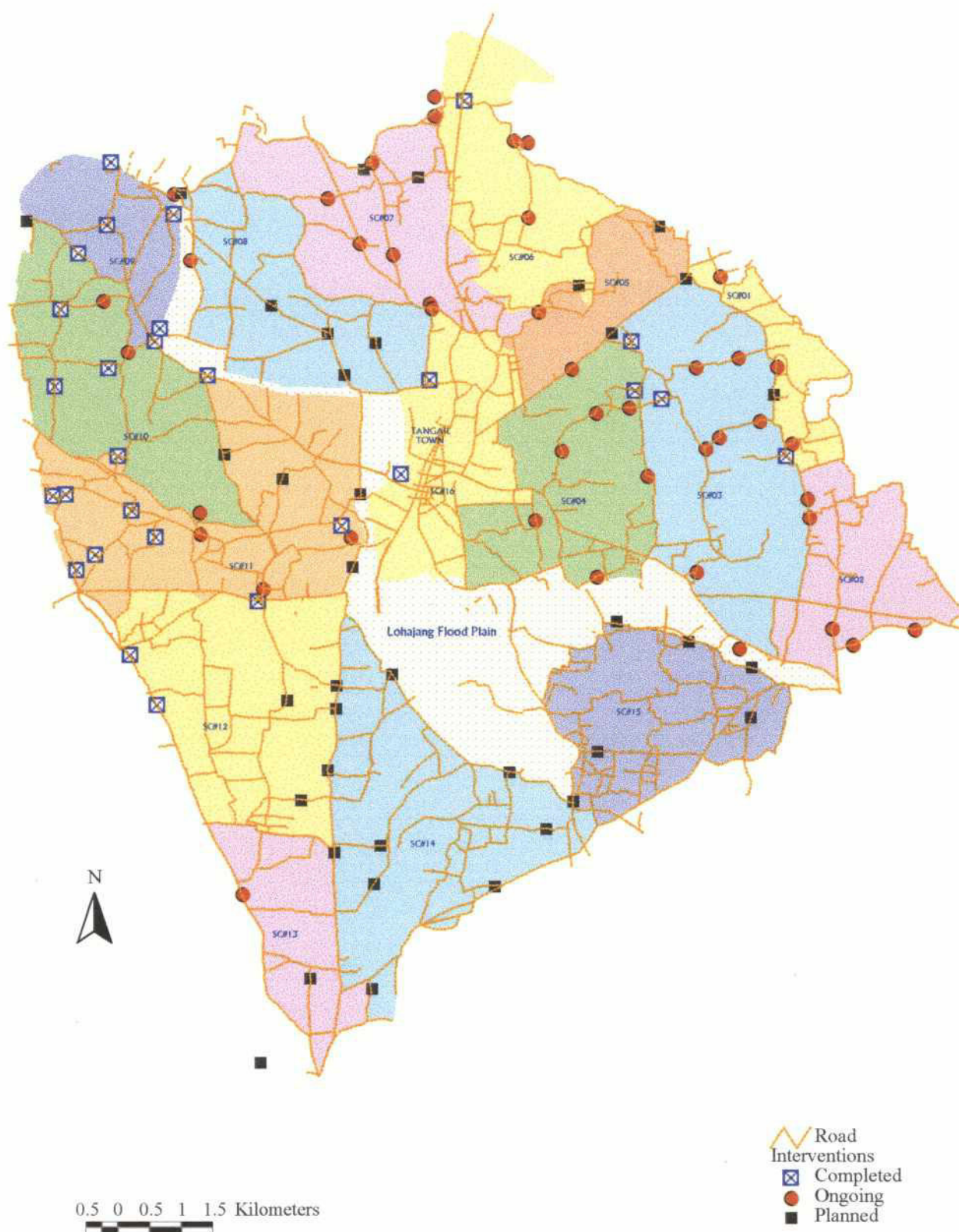
# Compartmentalization Pilot Project Tangail Drainage Congestion

28

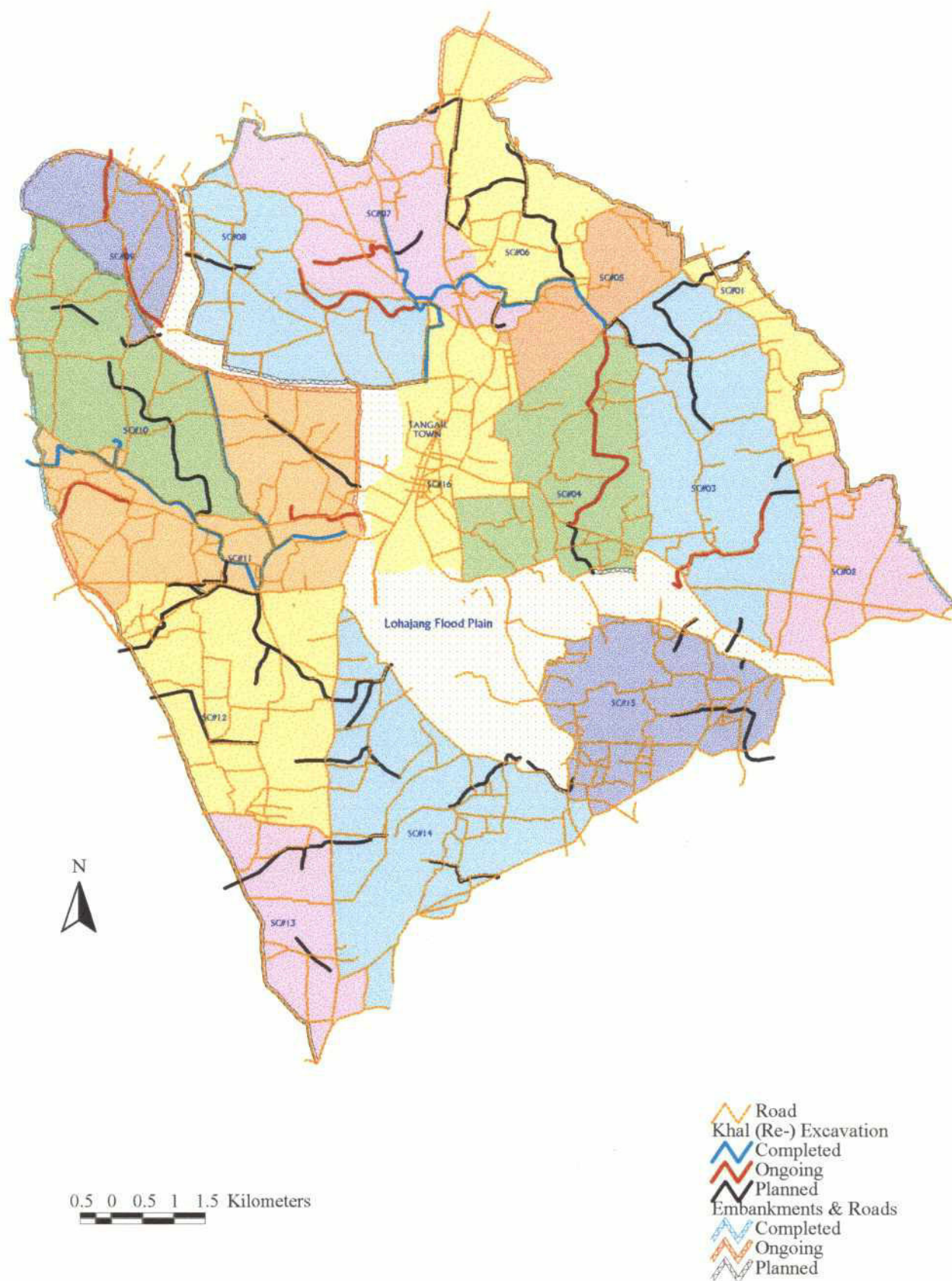




# Compartmentalization Pilot Project Tangail Physical Progress on 30 April of Structures

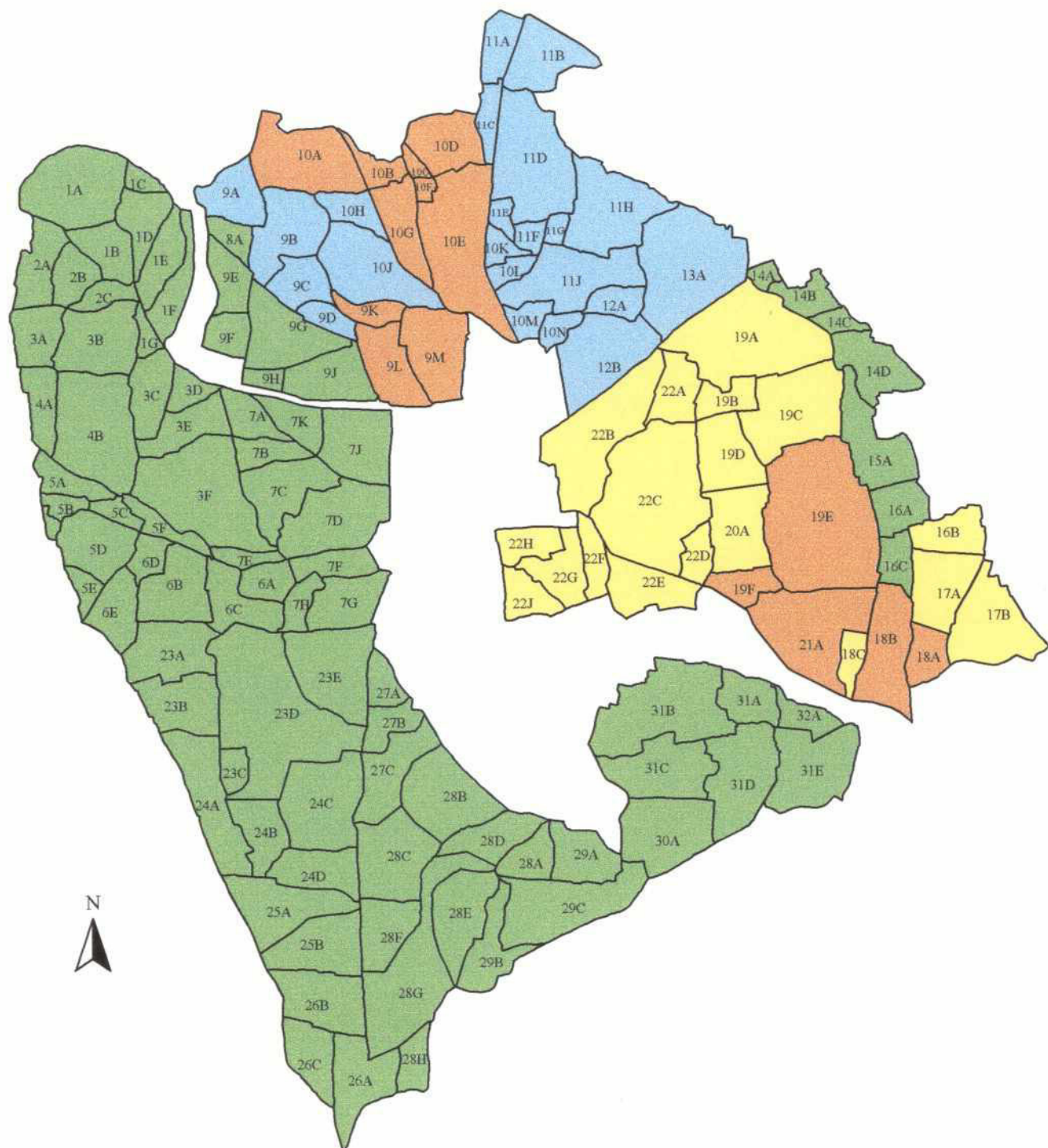


# Compartmentalization Pilot Project Tangail Progress of Khal Excavation and Embankments on 30 April





# Compartmentalization Pilot Project Tangail Institutional Impact



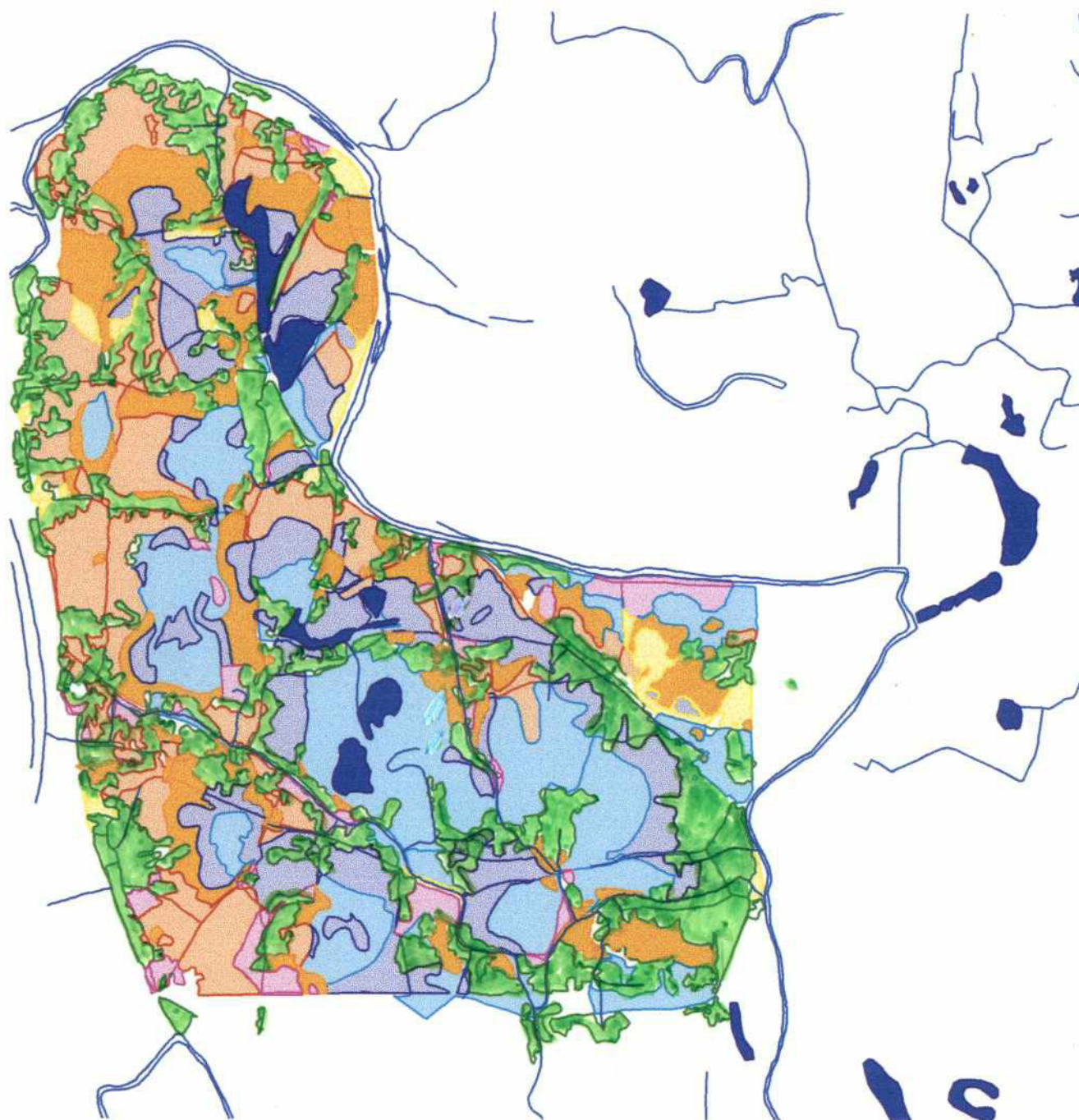
0.5 0 0.5 1 1.5 Kilometers

- Institutional Status**
- institutional set up completed
  - initial effort failed
  - completion planned by June 95
  - farmers meeting left, planned by June 95



# Compartmentalization Pilot Project Tangail

## Cluster IB : Monsoon Cropping Pattern

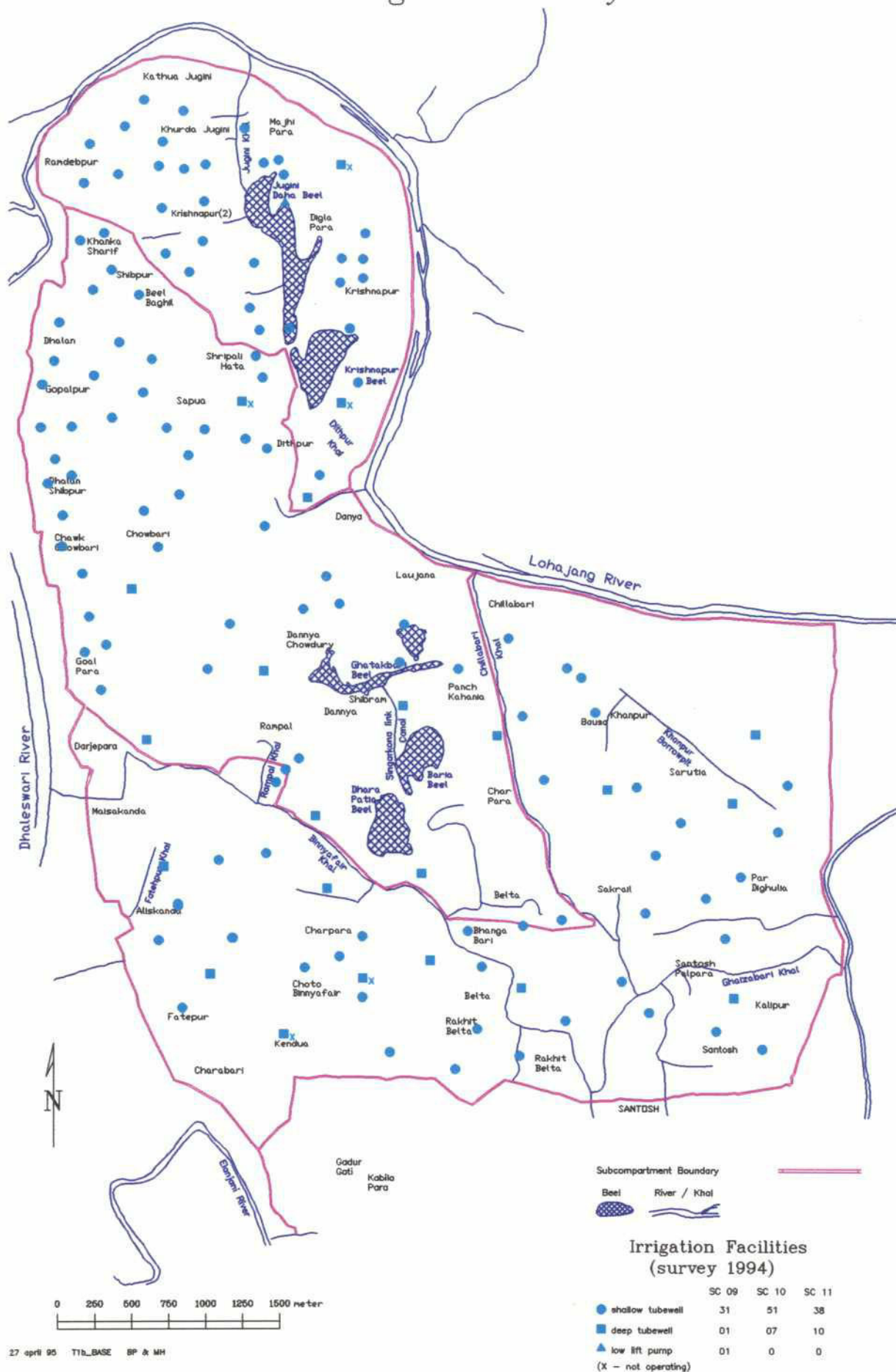


250 0 250 500 750 Meters

- River & Khal
- Perennial Beel
- Landuse
- Deep Water Aman
- HYV Aman
- Local Aman
- Not Cultivated
- Settlement
- Sugarcane
- Water Congestion

Chawkname	Aman HYV	Aman LOC	Aman DW	Sugarcane	Water Congestion	Not Cultivated	Gross Cultivable Area
1A	51	33	9	0	0	9	102
1B	3	10	21	0	11	3	48
1C	6	2	0	2	0	1	11
1D	6	14	5	0	0	0	25
1E	10	8	14	1	3	0	36
1F	7	14	13	1	5	18	58
1G	0	3	5	0	0	1	9
<b>System 1</b>	<b>83</b>	<b>84</b>	<b>67</b>	<b>4</b>	<b>19</b>	<b>32</b>	<b>289</b>
<b>Subcompartment 9</b>	<b>83</b>	<b>84</b>	<b>67</b>	<b>4</b>	<b>19</b>	<b>32</b>	<b>289</b>
2A	22	20	0	0	0	7	49
2B	8	6	12	0	0	3	29
2C	4	2	10	0	0	0	16
<b>System 2</b>	<b>34</b>	<b>28</b>	<b>22</b>	<b>0</b>	<b>0</b>	<b>10</b>	<b>94</b>
3A	22	7	0	0	9	3	41
3B	27	19	8	0	27	0	81
3C	18	1	17	0	13	2	51
3D	13	5	3	0	0	1	22
3E	4	7	27	1	6	0	45
3F	0	10	28	1	114	0	153
<b>System 3</b>	<b>84</b>	<b>49</b>	<b>83</b>	<b>2</b>	<b>169</b>	<b>6</b>	<b>393</b>
4A	33	0	0	0	0	3	36
4B	36	31	25	7	60	0	159
<b>System 4</b>	<b>69</b>	<b>31</b>	<b>25</b>	<b>7</b>	<b>60</b>	<b>3</b>	<b>195</b>
<b>Subcompartment 10</b>	<b>187</b>	<b>108</b>	<b>130</b>	<b>9</b>	<b>229</b>	<b>19</b>	<b>682</b>
5A	9	3	0	5	0	0	17
5B	7	3	0	0	0	6	16
5C	0	7	4	0	0	0	11
5D	18	16	18	0	11	0	63
5E	12	1	0	7	0	6	26
5F	7	2	1	6	2	0	18
<b>System 5</b>	<b>53</b>	<b>32</b>	<b>23</b>	<b>18</b>	<b>13</b>	<b>12</b>	<b>151</b>
6A	0	1	11	2	22	0	36
6B	5	7	32	5	31	0	80
6C	0	7	5	10	20	5	47
6D	2	1	16	2	0	0	21
6E	29	0	0	7	0	9	45
<b>System 6</b>	<b>36</b>	<b>16</b>	<b>64</b>	<b>26</b>	<b>73</b>	<b>14</b>	<b>229</b>
7A	6	2	26	2	0	0	36
7B	6	5	6	2	0	0	19
7C	7	2	11	2	53	0	75
7D	0	3	25	0	57	0	85
7E	0	0	11	0	6	0	17
7F	0	3	6	1	15	16	41
7G	0	18	0	1	19	0	38
7H	0	6	0	0	6	5	17
7J	4	24	3	13	22	20	86
7K	6	12	1	6	10	2	37
<b>System 7</b>	<b>29</b>	<b>75</b>	<b>89</b>	<b>27</b>	<b>188</b>	<b>43</b>	<b>451</b>
<b>Subcompartment 11</b>	<b>118</b>	<b>123</b>	<b>176</b>	<b>71</b>	<b>274</b>	<b>69</b>	<b>831</b>
<b>ClusterIB</b>	<b>388</b>	<b>315</b>	<b>373</b>	<b>84</b>	<b>522</b>	<b>120</b>	<b>1802</b>

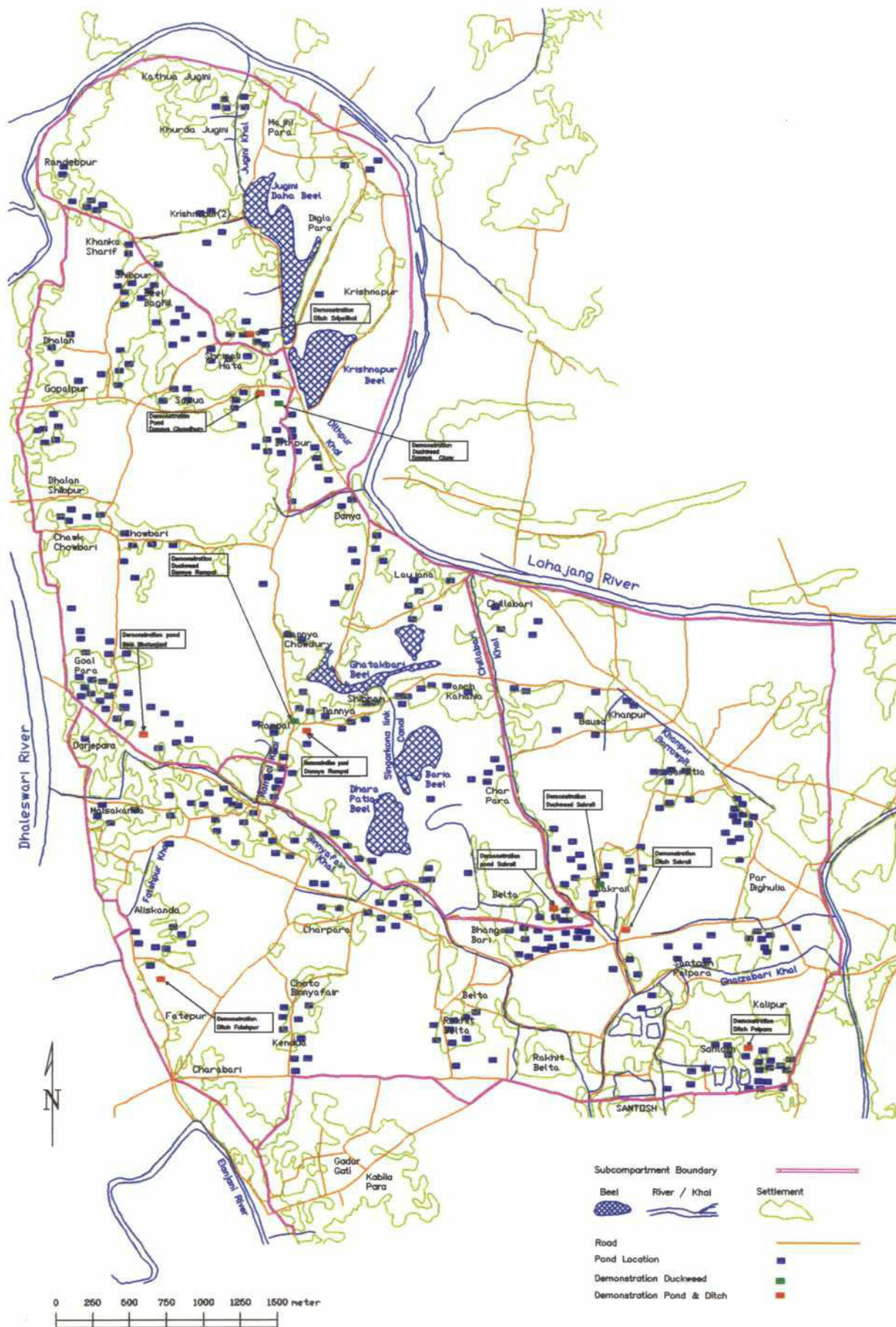
# Compartmentalization Pilot Project Tangail Cluster IB : Irrigation Survey 1994





# Compartmentalization Pilot Project Tangail

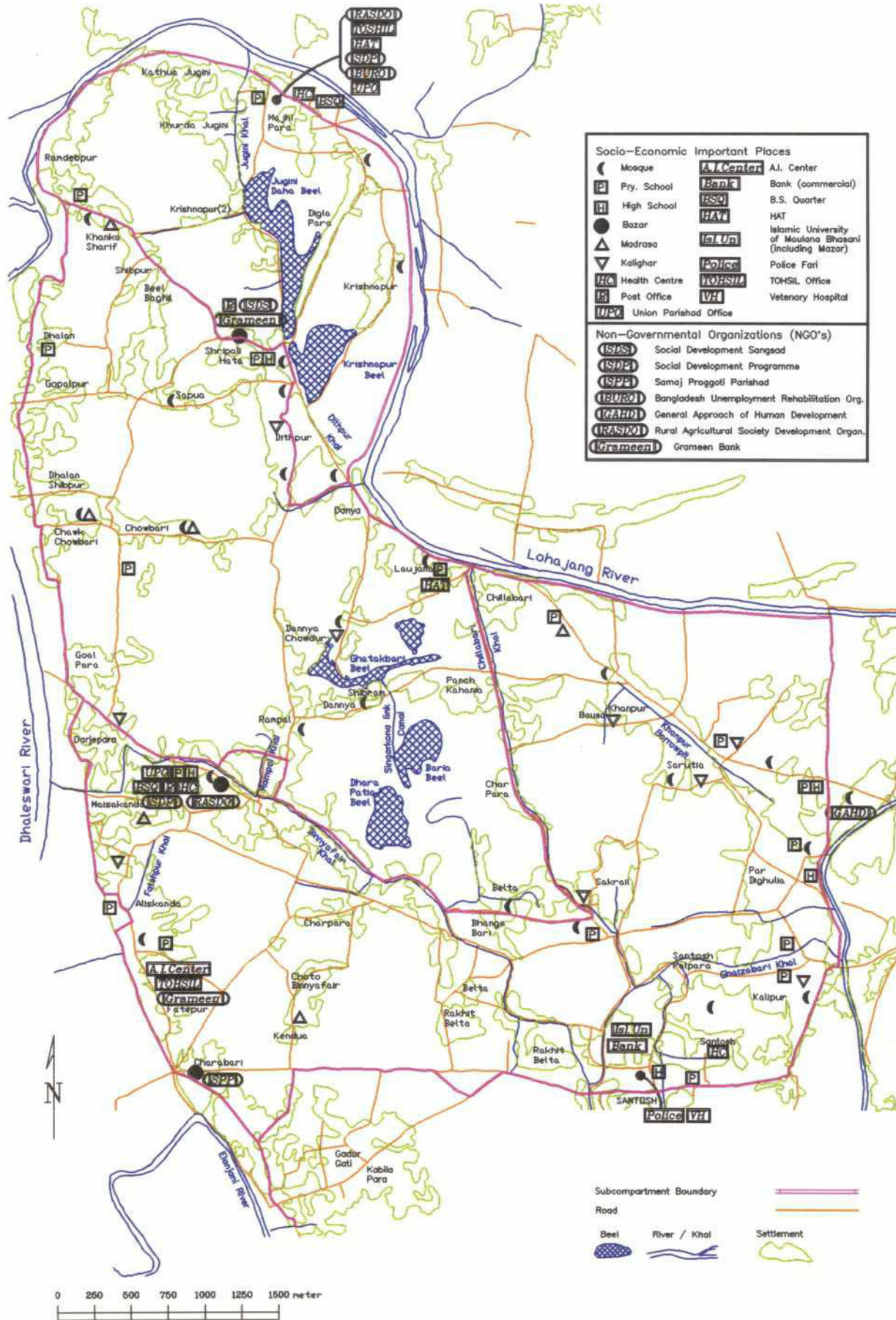
## Cluster IB : Fish Ponds



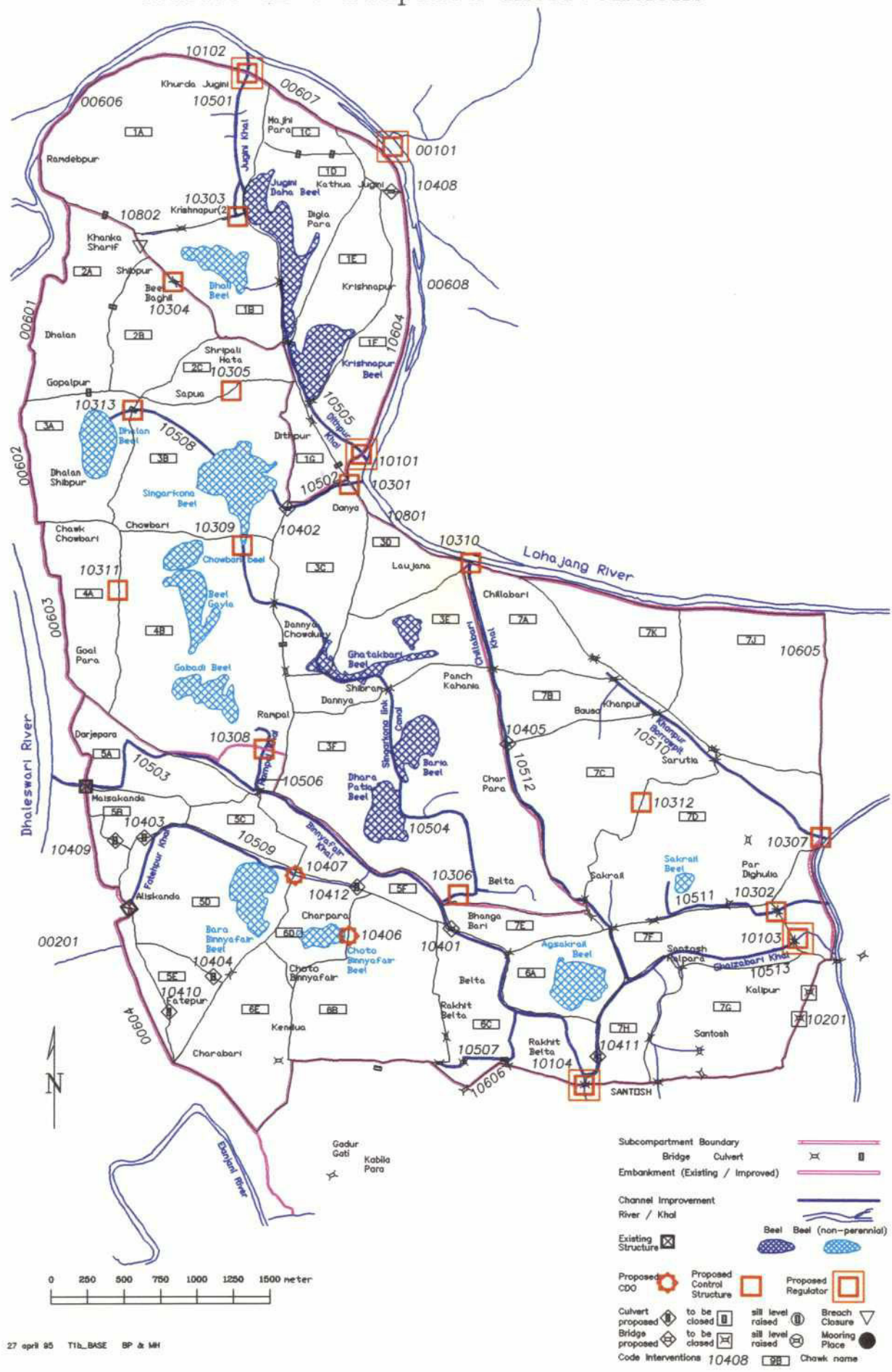


# Compartmentalization Pilot Project Tangail

## Cluster IB : Socio-Economics



# Compartmentalization Pilot Project Tangail Cluster IB : Proposed Interventions





## Interventions CPP Tangail - Status per 30 April 1995

Thursday, 4 May 1995

code	name	location	sc	cost*	status*	progress	start*
Map: Cluster Ib							
Cluster Ia							
Construction of regulator (1)							
00101	Lohajang Main Inlet	Jugini	18	97.44	o	87%	1/12/93
				Total for Construction of regulator (1): 1			
Modification (2)							
00201	Belta & Indrobelta, Fatehpur & Binnafair Sluice Modif.	Subcompartment 11 & 12	18	1.51	c	100%	15/12/93
				Total for Modification (2): 1			
Upgrading of compartmental embankment (6)							
00601	Ramdevpur - Silimpur Resec Km 0.00-1.40	Ramdevpur to Gopalpur	18	6.24	c	100%	1/1/94
00602	Ramdevpur - Silimpur Resec Km 1.40-1.89	Gopalpur to Dhalan	18	6.60	o	8%	31/12/94
00603	Ramdevpur - Silimpur Resec Km 1.89-4.84	Dhalan to Binnafair	18	8.95	c	100%	1/1/94
00604	Fatehpur Advanced Embankment Km 4.837-7.042	Fatehpur	18	25.80	o	90%	1/1/94
00606	Ramdevpur to Rasulpur Resec Km 0.00-1.10	Ramdevpur - Khorda Jugini	18	3.40	p	0%	31/12/94
00607	Ramdevpur to Rasulpur Resectioning Km 1.10-3.06	Khorda Jugini - Kathua Jugini	18	4.23	o	96%	1/1/94
00608	Ramdevpur to Rasulpur Resectioning Km 3.06-3.90	Kathua Jugini - Pichuria	18		p	0%	1/1/96
				Total for Upgrading of compartmental embankment (6): 7			
				Total of interventions for cluster Ia: 9			
Cluster Ib							
Construction of regulator (1)							
10101	Dithpur Outlet	Dithpur	9	18.67	c	100%	15/4/93
10102	Khorda Jugini Inlet	Jugini	9	26.18	c	100%	25/2/93
10103	Kagmari Outlet	Kagmari	11	50.00	o	96%	15/12/93
10104	Santosh Regulator	Santosh	11	68.42	c	100%	15/2/94
				Total for Construction of regulator (1): 4			
Modification (2)							
10201	Modification of Culverts	Santosh	11		p	0%	31/12/94
				Total for Modification (2): 1			
Minor regulator (CDO/Weir) (3)							
10301	Dannya Chowdhury CDO	Dannya Chowdhuri	11	9.45	c	100%	28/2/93
10302	Dighulia-1 CDO	Dighulia	11	10.16	c	100%	15/3/93
10303	Krishnapur WCS	Khrishnapur	9	11.27	c	100%	15/2/94
10304	Beel Baghil WCS	Beel Baghil	9	4.36	c	100%	15/2/94
10305	Edgah Maidan WCS	Edgah Maidan	10	7.19	o	80%	15/2/94
10306	Bhangabari CDO	Bhangabari	10	25.14	o	52%	15/2/94
10307	Dighulia-2 CDO	Dighulia	11	10.78	p	0%	15/2/94
10308	Rampal CDO	Rampal	10	10.81	c	100%	1/3/94
10309	Singerkona Beel WCS	Singerkona Beel	10	11.84	c	100%	15/2/94
10310	Chillabari CDO	Chillabari	11	10.51	c	100%	30/3/93
10311	Chowbari WCS	Chowbari	10	3.67	c	100%	28/2/94
10312	Sarutia CDO	Sarutia	11		p	0%	31/12/95
10313	Sapua WCS	Sapua	10	3.82	c	100%	28/2/94
				Total for Minor regulator (CDO/Weir) (3): 13			
Bridge/Culverts/Irr. pass/Drain pipe (4)							
10401	Ghoramara Bridge over Binnafair khal	Ghoramara	11	32.88	o	5%	31/12/94
10402	Singerkona Dhannya Chowdhury Bridge	Singerkona Dhannya Chy	10	4.36	o	50%	28/2/94
10403	Alishakanda Culvert	Alishakanda	11	0.92	c	100%	28/2/94
10404	Fatehpur Anehola Road Culvert	Fatehpur Anehola Road	11	0.90	c	100%	28/2/94
10405	Panchkahunia Bridge over Chillabari Khal	Panchkahunia - Chillabari Khal	11		p	0%	1/1/96
10406	Choto Binnafair Culvert	Chuto Binnafair	11	6.81	c	100%	28/2/94
10407	Charpara Culvert	Charpara	11	8.15	c	100%	28/2/94
10408	Kathuajugini Culvert	Kathuajugini	9	1.50	c	100%	28/2/94
10409	Moishakanda Culvert	Moishakanda	11	1.10	c	100%	28/2/94
10410	Fatehpur Culvert	Fatehpur	11	1.17	c	100%	28/2/94

code	name	location	sc	cost*	status*	progress	start*
10411	Gaizabari Bridge near Santosh	Santosh	11	30.52	o	30%	31/12/94
Total for Bridge/Culverts/Irr. pass/Drain pipe (4):				11			
Excavation/Re-excavation of canal (5)							
✓10501	Jugini Khal	Jugini Khal	9	3.42	o	90%	1/3/94
10502	Singarkona Dhannya Choudhury Khal	Singarkona - Dhannya Choudhury	10	4.27	p ✓	0%	1/1/94
10503	Binnafair Khal, Dhaleswari to Rampal & on to Santosh	Binnafair Khal	11	7.88	c	100%	1/3/94
10504	Singerkona Beel - Binnafair Khal Link Canal	Singerkona - Binnafair Khal	10	1.07	p ✓	0%	31/12/94
10505	Dithpur Khal Reexcavation	Dithpur	9	2.07	o	55%	28/2/94
10506	Rampal Khal Re-excavation	Rampal Khal	10	1.91	c	100%	28/2/94
10507	Charpara Khal Re-excavation	Charpara Khal	11	0.38	p ✓	0%	1/2/95
10508	Dhalan Beel to Singerkona Beel Link Canal	Dhalan	10		p ✓	0%	31/12/94
10509	Fatehpur Khal	Chutobinnafair	11	6.00	o	75%	31/12/94
10510	Khanpur Borrowpit Extension	Khanpur, Digulia	11		p ✓	0%	31/12/94
10511	Dighulia khal	Kalipur	11	0.98	o	20%	31/12/94
10512	Chillabari Khal	Chillabari to Sakrail	11		c	100%	
10513	Gaizabari Khal	Santosh to Kagmari	11		c	100%	
Total for Excavation/Re-excavation of canal (5):				13			
Upgrading of compartmental embankment (6)							
✓10604	Dithpur to Main Inlet Embankment	Dithpur to Main Inlet	9	5.60	o	85%	15/3/93
10605	Pardighulia to Sarutia to Chillabari SC Embankment	Pardighulia to Sarutia to Chillabari	11	10.07	o	22%	31/1/94
10606	Rakhitbelta SC Embankment	Rakhitbelta	11		p ✓	0%	31/12/94
Total for Upgrading of compartmental embankment (6):				3			
Access road improvement (8)							
10801	Approach Road on Chillabari & Dhannya Chy CDOs	Chillabari to Dhannya Choudhury	9	2.22	o	80%	31/12/94
10802	Dithpur to Shibpur Road	Dithpur to Shibpur	9	50.71	c	100%	1/1/94
Total for Access road improvement (8):				2			
Total of interventions for cluster Ib:				47			

#### Cluster VI not in map

Excavation/Re-excavation of canal (5)						
60502	Lohajang Loop Cutting	Ramdevpur	17	p ✓	0%	30/11/94
Total for Excavation/Re-excavation of canal (5):				1		
River bank protection (9)						
60902	Lohajang River Mouth Stabilisation	Lohajang River Mouth	17	p ✓	0%	15/3/95
Total for River bank protection (9):				1		
Peripheral mitigation (12)						
61201	Kagmari Mooring Place	Kagmari	17	p ✓	0%	31/12/95
61202	Shibpur Mooring Place	Shibpur	17	p ✓	0%	31/12/95
Total for Peripheral mitigation (12):				2		
Total of interventions for cluster VI:				4		
Total of interventions for Tangail Compartment:				186		



## Map 15





code	name	location	sc	cost*	status*	progress	start*
Map: Cluster II							
Cluster Ia							
Construction of regulator (1)							
00102	Sadullapur Regulator	Sadullapur	18	57.60	o	40%	1/12/93
00103	Rasulpur Inlet	Rasulpur	18	36.88	o	92%	28/1/93
Total for Construction of regulator (1):			2				
Upgrading of compartmental embankment (6)							
00605	Ramdevpur - Silimpur Resec Km 7.042-16.275 km	Charabari Embankment (to Silimpur)	18		p	0%	31/12/94
00609	Ramdevpur to Rasulpur Resectioning Km 3.90 -6.77	Pichuria-Gala	18	8.79	c	100%	1/1/94
00610	Ramdevpur to Rasulpur Resec (Km 6.77-9.53)	Gala to Rasulpur	18		p	0%	31/12/94
00611	Rasulpur to Selina (New & Resec) Km 0.00-4.35	Rasulpur-Selina	18	35.69	o	42%	15/12/93
00612	Rasulpur to Selina (Resec) Km 4.35-5.09	Rasulpur-Selina	18	5.67	p	0%	31/12/94
Total for Upgrading of compartmental embankment (6):			5				
Total of interventions for cluster Ia:			7				
Cluster II							
Construction of regulator (1)							
20101	District Regulator	near Dist. HQ	8	54.38	c	100%	1/4/94
Total for Construction of regulator (1):			1				
Modification (2)							
20201	Bararia Sluice	Baruria	5		p	0%	31/12/94
Total for Modification (2):			1				
Minor regulator (CDO/Weir) (3)							
20301	Enayetpur WCS-1	Enayetpur	8	9.97	o	30%	30/11/94
20302	Salina Regulator	Selina	6	12.97	c	100%	15/2/94
20303	Enayetpur WCS-2	Enayetpur	7	32.27	o	40%	31/12/94
20304	Beel Garindha WCS	Garindha	5	20.75	o	30%	31/12/94
20305	Agbetur WCS	Agbetur	6	36.03	o	30%	31/12/94
20306	Sadullapur WCS	Sadullapur	7		p	0%	30/11/95
20307	Bhatchanda WCS-1	Bhatchanda	7	8.14	o	40%	1/12/94
20308	Bhatchanda WCS-2	Bhatchanda	7	6.33	o	15%	1/12/94
20309	Magurhata WCS	Magurhata	7	13.86	o	20%	30/11/94
20310	Dharerbari WCS	Dharerbari	8	13.49	o	15%	31/12/95
20311	Bashar Char WCS	Bashar Char	8		p	0%	31/12/95
20312	Char Kagmara WCS	Char Kagmara	8		p	0%	31/12/95
20313	Dariabari WCS (Gated Pipe Culvert)	Dariabari	8		p	0%	30/11/95
20314	Bamankushia WCS	Bamankushia	6		p	0%	15/12/95
20315	Suruj WCS	Suruj	5		p	0%	31/1/96
Total for Minor regulator (CDO/Weir) (3):			15				
Bridge/Culverts/Irr. pass/Drain pipe (4)							
20402	Enayetpur Pipe Culvert	Enayetpur	8		p	0%	30/11/95
20403	Pass Betur Irrigation Pass	Pass Betur	6	2.35	o	70%	31/12/94
20404	Kandila Bridge	Pass Betur	6	25.45	o	12%	31/12/94
Total for Bridge/Culverts/Irr. pass/Drain pipe (4):			3				
Excavation/Re-excavation of canal (5)							
20501	Sadullapur Khal	Sadullapur	7	13.15	c	100%	1/12/93
20502	Magurhata Khal	Magurhata	7	0.78	o	90%	31/12/94
20503	Deolakandila Khal	Deolakandila	7	0.53	p	0%	31/1/95
20504	Agbetur Khal (Pasbetur Khal)	Agbetur	6		p	0%	31/1/96
20505	Dhopa Chara beel -Sadullapur Khal Link Canal	Dhopa Chara beel -Sadullapur Khal	7	0.41	p	0%	31/12/94
20506	Dharerbari Khal (part)	Dharerbari Khal (part)	8	1.03	p	0%	31/3/95
20507	District Khal	District Khal	8	5.23	c	100%	15/12/93
20508	Rasulpur Khal	Rasulpur	6	18.86	p	0%	31/12/94
20509	Bamni khal	Bamni	8	8.02	o	34%	31/12/94
Total for Excavation/Re-excavation of canal (5):			9				
Upgrading of compartmental embankment (6)							
20604	SC Embkt Dharerbari to District Regulator	Dharerbari to District regulator	8		p	0%	31/12/94

25

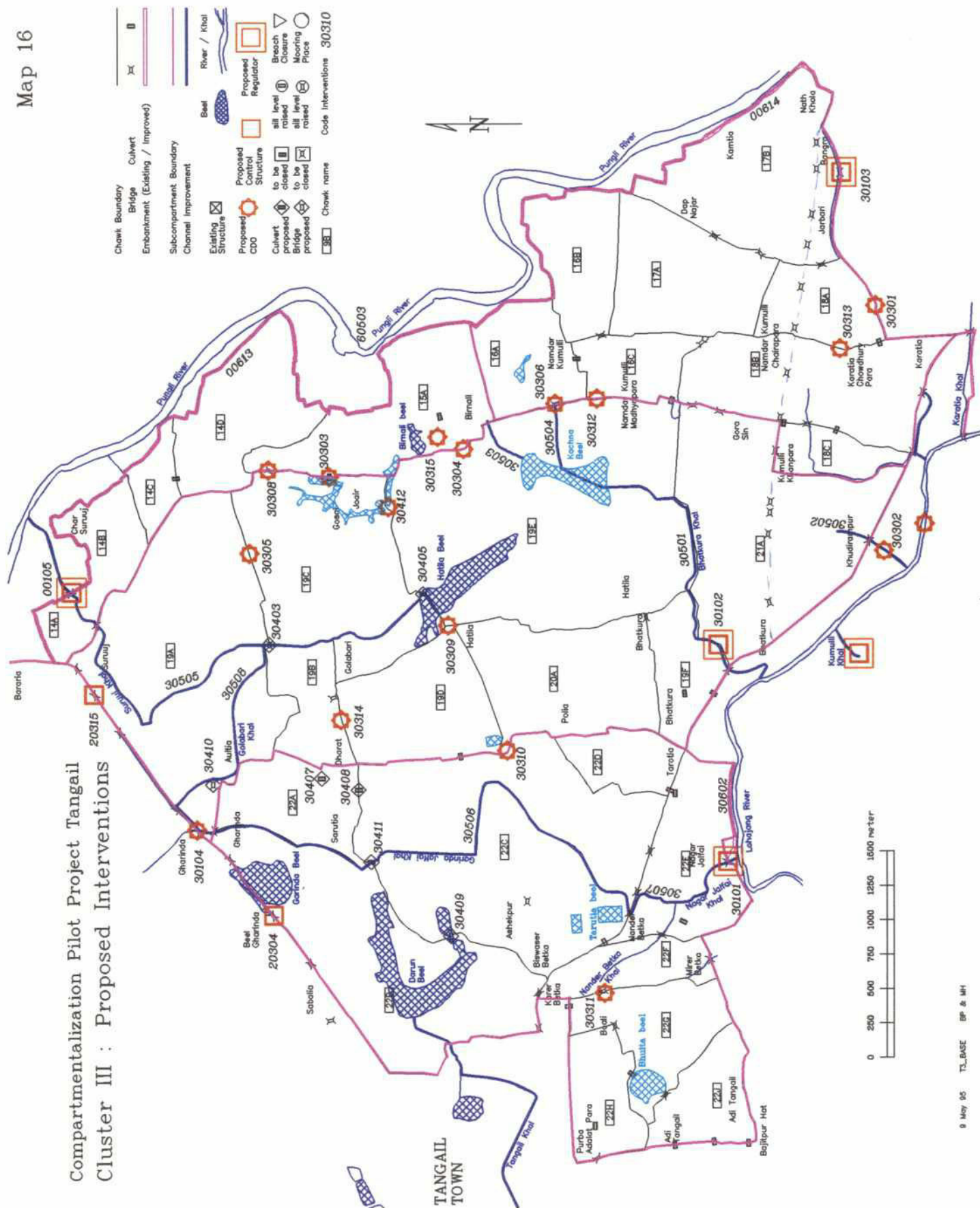
code	name	location	sc	cost*	status*	progress	start*
<i>Total for Upgrading of compartmental embankment (6):</i>						<i>I</i>	
<i>Access road improvement (8)</i>							
20801	Access road over District Regulator	District Regulator	8	1.53	o	65%	31/12/94
20802	Access road at Rasulpur Bridge	Rasulpur	6	2.05	p ✓	0%	30/11/94
<i>Total for Access road improvement (8):</i>						<i>2</i>	
<i>River bank protection (9)</i>							
20901	Pasbetur Groyne	Groyne at Pasbetur	6		o	92%	15/3/94
<i>Total for River bank protection (9):</i>						<i>1</i>	
<i>Total of interventions for cluster II:</i>						<i>33</i>	

### Cluster VI

<i>Bridge/Culverts/Irr. pass/Drain pipe (4)</i>							
60401	Rasulpur bridge	Rasulpur	17	33.03	o	20%	30/11/94
<i>Total for Bridge/Culverts/Irr. pass/Drain pipe (4):</i>						<i>1</i>	
<i>Peripheral mitigation (12)</i>							
61203	Mooring place at Main Inlet	Kathuajugini	17		p ✓	0%	31/12/95
61204	Mooring place at Sadullapur	Sadullapur	17		p ✓	0%	31/12/95
<i>Total for Peripheral mitigation (12):</i>						<i>2</i>	
<i>Total of interventions for cluster VI:</i>						<i>3</i>	
<i>Total of interventions for Tangail Compartment:</i>						<i>186</i>	



### Compartmentalization Pilot Project Tangaï Cluster III : Proposed Interventions



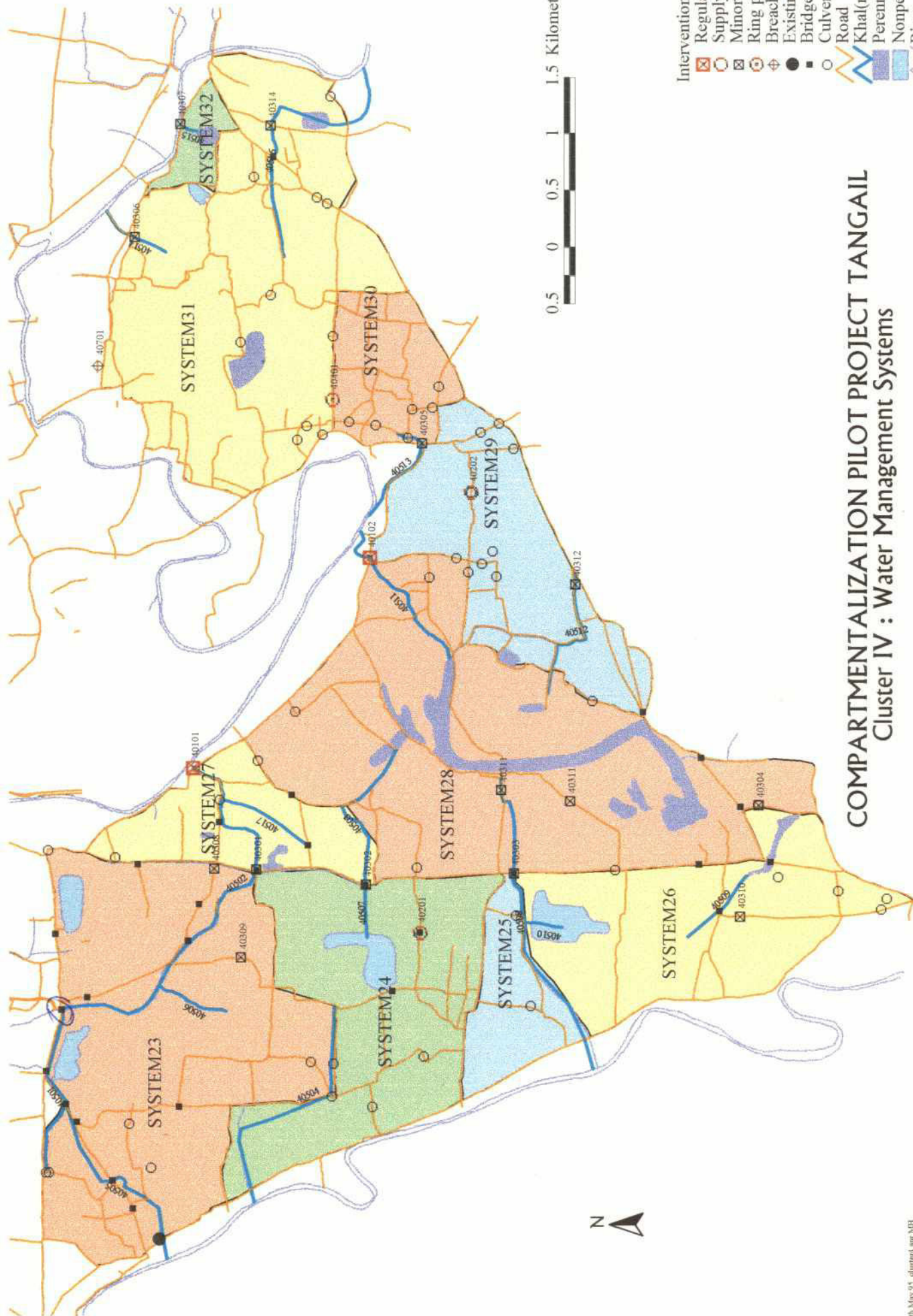


code	name	location	sc	cost*	status*	progress	start*
Map: Cluster III							
Cluster Ia							
Construction of regulator (1)							
00105	Suruuj Inlet	Suruuj	18	30.97	o	95%	15/1/94
				Total for Construction of regulator (1): 1			
Upgrading of compartmental embankment (6)							
00613	Selina to Nathkhola (Resec) Km 0.00-14.27	Selina to Nathkhola, Kholadbari	18		p ✓	0%	1/1/95
00614	Dhapnagar to Nathkhola (New) Km 14.27-15.39	Dhapnagar - Nathkola	18	14.32	c	100%	1/1/94
				Total for Upgrading of compartmental embankment (6): 2			
				Total of interventions for cluster Ia: 3			
Cluster III							
Construction of regulator (1)							
30101	Jalfai Outlet	Jalfai	4	54.62	o	82%	7/3/94
30102	Bhatkura Outlet	Bhatkura	3	57.74	o	87%	7/3/94
30103	Paschim Pauli WCS	Paschim Pauli	2	15.11	o	55%	31/12/94
✓30104	Garindha Bifurcation Structure	Garindha	3		p ✓	0%	30/11/94
				Total for Construction of regulator (1): 4			
Minor regulator (CDO/Weir) (3)							
30301	Karatia WCS	Karatia	2	15.11	o	60%	1/1/95
30302	Khudirampur WCS	Khudirampur	3	23.00	o	15%	1/1/95
30303	Gosaijoair (Atapara) gated pipe	Bimali	1		p ✓	0%	30/11/95
30304	Bimali WCS-1	Bimali	1	10.82	c	50%	1/1/95
30305	Niogijoair WCS	Niogijoair	1	6.85	o	60%	1/1/95
30306	Namdarkumulli WCS	Namdar Kumulli	2	7.70	o	60%	31/12/94
30308	Gosaijoair WCS	Gosaijoair	1	6.08	o	35%	1/1/95
30309	Hatila WCS	Hatila	3	5.52	o	35%	1/1/95
30310	Poila WCS	Poila	3	7.52	o	25%	1/1/95
30311	Mirer Betka WCS	Mirer Betka	4	8.89	o	10%	1/1/95
30312	Namdar Kumulli Moddhyapara WCS	Namdar Kumulli Moidhyapara Road	2	9.07	o	60%	1/1/95
30313	Karatia Choudhurypara WCS	Karatia Choudhurypara	2	6.92	o	52%	1/1/95
30314	Dharat WCS (Designed as Box Culvert)	Dharat	3	5.04	c	100%	1/1/95
30315	Bimali gated pipe culvert WCS-2	Bimali	1	5.26	o	80%	1/1/95
				Total for Minor regulator (CDO/Weir) (3): 14			
Bridge/Culverts/Irr. pass/Drain pipe (4)							
30403	Golabari Box Culvert	Golabari	3	10.80	o	60%	1/1/95
30405	Hatila Box Culvert	Hatila	3	19.64	o	65%	1/1/95
30407	Dharat Pipe Culvert (Designed WCS)	Dharat	4	1.97	o	65%	1/1/95
30408	Sarutia Pipe Culvert	Sarutia	4	1.32	o	80%	1/1/95
30409	Darun Box Culvert	Darun	4	25.29	o	50%	1/1/95
30410	Aultia pipe culvert	Aultia	3	3.17	c	100%	1/1/95
30411	Sarutia Box Culvert	Sarutia , Garinda khal	4	17.86	o	15%	1/1/95
30412	Gosaijoiar Box Culvert	Sarutia , Garinda khal	3	11.14	o	70%	1/1/95
				Total for Bridge/Culverts/Irr. pass/Drain pipe (4): 8			
Excavation/Re-excavation of canal (5)							
30501	Bhatkura Khal	Bhatkura Khal	3	9.24	o	60%	1/1/95
30502	Khudirampur Khal	Khudirampur Khal	3	4.18	p ✓	0%	1/1/95
30503	Bimali Bhatkura Khal	Bimali Bhatkura Khal	3		p ✓	0%	31/1/96
30504	Namdar Kumulli Bhatkura Khal	Kumulli Namdar Bhatkura Khal	3		p ✓	0%	31/1/96
30505	Suruuj Khal (part)	Suruuj Khal	3	2.00	p ✓	0%	1/1/95
30506	Gharinda Khal upto Jalpai	Garindha	4	22.68	o	2%	31/12/94
30507	Jalpai Khal	Jalpai	4	4.08	p ✓	0%	31/12/94
30508	Golabari Khal	Golabari	3	2.48	p ✓	0%	31/12/94
				Total for Excavation/Re-excavation of canal (5): 8			
Upgrading of compartmental embankment (6)							
30602	NagarJalpai to Taratia SC embkt	Nagor Jalphai & Taratia	2		p ✓	0%	1/1/96
				Total for Upgrading of compartmental embankment (6): 1			

02

code	name	location	sc	cost*	status*	progress	start*
Total of interventions for cluster III:							35
<b>Cluster VI</b>							
<i>Excavation/Re-excavation of canal (5)</i>							
60503	Birnali Loop Cutting	Birnali	17		p ✓	0%	15/3/96
Total for Excavation/Re-excavation of canal (5):			1				
Total of interventions for cluster VI:			1				
Total of interventions for Tangail Compartment:			186				





# COMPARTMENTALIZATION PILOT PROJECT TANGAIL Cluster IV : Water Management Systems



code	name	location	sc	cost*	status*	progress	start*
Map: Cluster IV							
Cluster Ia not in map							
Construction of regulator (1)							
00104	Baruha Inlet	Baruha	18	30.57	o	90%	15/1/94
				Total for Construction of regulator (1):	1		
				Total of interventions for cluster Ia:	1		
Cluster IV							
Construction of regulator (1)							
40101	Aloaraypara Regulator	Aloaraypara	15		p ✓	0%	
40102	Deoan Regulator	Deoan	14		p ✓	0%	
				Total for Construction of regulator (1):	2		
Modification (2)							
40201	Supply of 1 gate on ext. culvert at Charpara	Charpara	12		p ✓	0%	
40202	Supply of 1 gate on ext. culvert Mongalhaor-Pathrail R	Mongalhaor-Pathrail road	14		p ✓	0%	
				Total for Modification (2):	2 ✓		
Minor regulator (CDO/Weir) (3)							
40301	Aloa Bhabani WCS	Aloa Bhabani	12		p	0%	
40302	Berabuchna WCS	Berabuchna	12		p	0%	
40303	Burburia WCS	Burburia	13		p	0%	
40304	Bara Atia WCS	Bara Atia	13		p	0%	
40305	Pathrail Gated Pipe Culvert	Pathrail	15		p	0%	
40306	Kumuli Gated Pipe Culvert	Kumuli	15		p	0%	
40307	Khagjana Gated Pipe Culvert	Khagjana	15		p	0%	
40308	Aloabhabani Gated Pipe Culvert-1	Aloabhabani	12		p	0%	
40309	Aloabhabani Gated Pipe Culvert-2	Aloabhabani	12		p	0%	
40310	Mahmudpur Gated Pipe Culvert	Mahmudpur	14		p	0%	
40311	Bandabari Gated Pipe Culvert	Bandabari	14		p	0%	
40312	Kandoor Gated Pipe Culvert	Kandoor	14		p	0%	
40313	Kumuria Gated Pipe Culvert	Kumuria	14		p	0%	
40314	Birpusia WCS	Birpusia	15		p	0%	
				Total for Minor regulator (CDO/Weir) (3):	14 ✓		
Bridge/Culverts/Irr. pass/Drain pipe (4)							
40401	Ring Pipe on Chandi-Karatia road	Chandi-Karatia road	15		p	0%	
				Total for Bridge/Culverts/Irr. pass/Drain pipe (4):	1 ✓		
Excavation/Re-excavation of canal (5)							
40501	Sontosh Khal	Sontosh	12		p	0%	
40502	Aloa Khal	Aloa	12		p	0%	
40503	Berabuchna-kumari Khal	Berabuchna-Kumari	14		p	0%	
40504	Barabelta Khal	Barabelta	12		p	0%	
40505	Indrabelta Khal	Indrabelta	12		p	0%	
40506	Katakhali Link Canal	Katakhali	12		p	0%	
40507	Bagerchara Link Canal	Bagerchara	12		p	0%	
40508	Baruha Khal	Baruha	13		p	0%	
40509	Mahmudpur Link Canal	Mahmudpur	13		p	0%	
40510	Baruha Link Canal	Baruha	13		p	0%	
40511	Deoan Khal	Deoan	14		p	0%	
40512	Dosagia Khal	Dosagia	14		p	0%	
40513	Pathrail Khal	Pathrail	15		p	0%	
40514	Kumuli Khal	Kumuli	15		p	0%	
40515	Khagjana Khal	Khagjana	15		p	0%	
40516	Birpusia khal	Birpusia	15		p	0%	
40517	Kumargara Link Canal	Kumargara	14		p	0%	
				Total for Excavation/Re-excavation of canal (5):	17 ✓		
Breach closure (7)							
40701	Closing of 3 breaches in northern boundary of SC15	Northern boundary of SC15	15		p	0%	
				Total for Breach closure (7):	1 ✓		

code	name	location	sc	cost*	status*	progress	start*
------	------	----------	----	-------	---------	----------	--------

Total of interventions for cluster IV: 37

CS

**Cluster VI not in map**

*Excavation/Re-excavation of canal (5)*

60501	Lohajang River	Lohajang River	17		p	0%	30/11/94
60504	Gunikishore Loop cutting	Gunikishore	17		p	0%	31/12/94

Total for Excavation Re-excavation of canal (5): 2

*River bank protection (9)*

60904	Gunikishore Protective Work	Gunikishore, on Elanjani River	17	7.35	c	100%	1/1/93
-------	-----------------------------	--------------------------------	----	------	---	------	--------

Total for River bank protection (9): 1

Total of interventions for cluster VI: 3

Total of interventions for Tangail Compartment: 186



code	name	location	sc	cost*	status*	progress	start*
Map: not in map							
Cluster VI							
River bank protection (9)							
60901	Pardighulia Protective Work	Pardighulia	17	12.10	c	100%	31/1/94
60903	Protective Work near Rafat Textile Mills	Tangail Town on Lohajang River	17	24.64	c	100%	1/1/93
Total for River bank protection (9):				2			
O&M during construction (13)							
61301	Supplying, fixing RCC Pilar	CPP area	17	2.12	o	75%	31/12/94
Total for O&M during construction (13):				1			
Total of interventions for cluster VI:				3			
Total of interventions for Tangail Compartment:				186			

